

Lancaster County Family Treatment Drug Court

Case Progression

FTDC cases reach important case milestones faster.

Average days from Petition to Case Closure.

FTDC

Control

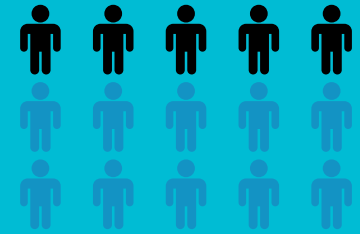
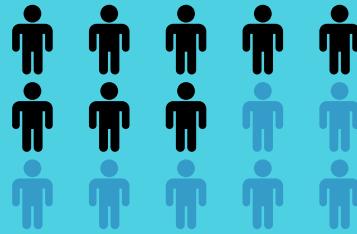


513 days

680 days

Reunification

More FTDC cases close through reunification.

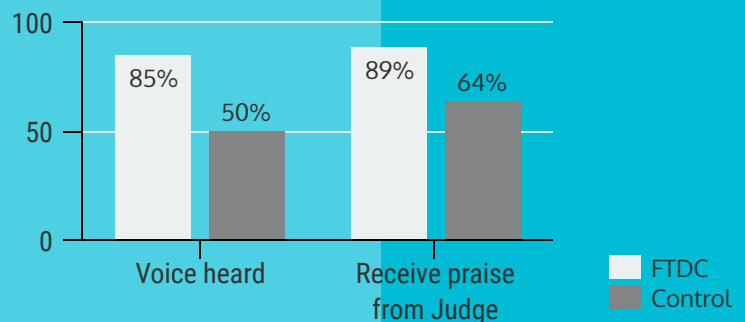


48%

32%

Parent Perception

FTDC families report more positive experiences with the court.



Service Participation

Of those who were ordered, more FTDC families completed substance use treatment.



35%

13%

Shortening Time to Permanency

FTDC cases reach permanency faster, likely through increasing parent participation in services.

FTDC Track + 65%

Parent participates in substance use/mental health treatment + 143%



Older Children -11%