



SWYC:
The Free Tool You've
Been Missing

JAYNA BACZWASKI, LIMHP, LISW

Assessment, Assessment, and... More Assessment!



- ▶ Early Childhood Interventionists
- ▶ Therapists who work with the Parent-Child Relationship:
 - Why is Assessment Important?
 - What tools/screens/instruments have you found along the way to be very helpful? Why?



What is the SWYC?

The Survey of Well-Being of Young Children


- ▶ Free
- ▶ Concise
- ▶ User-Friendly
- ▶ **Relationship-Focused**
- ▶ For Parent-Child Intervention Therapists

****Find it Here****
www.theSWYC.org

Again, Find it Here:


- ▶ Go ahead and download a 4 month old form (IT'S FREE!)
- ▶ We will be using the SWYC in a few more slides...

Again, Find it Here:
www.theSWYC.org



Roots...

- ▶ In 2014:
 - As Part of the Early Childhood Comprehensive Systems (ECCS) Grant
 - The Together for Kids & Family Mental Health Workgroup:
 - Charged with identifying an Instrument to Assess LOXC SIBSS for children aged 0-3
 - Scored by Mark Hald, Barb Jackson, Traci Penrod-McCormick, Tiffany Mullison



Together for Kids & Families

Overall Goal...Applicable to your work?

To identify a tool that anyone doing Early Intervention Work could use, to reliably and validly assess:

- Social Emotional Competence
- Behavior Problems
- Toxic Stress

Out of 26 screening tools, 6 were selected for consideration...

Instruments Assessed: Some Familiar Faces...

Survey of Wellbeing of Young Children
(SWYC)

Parents' Evaluation of Developmental Status
(PEDS)

Ages & Stages Questionnaire – Socio-Emotional
(ASQ-SE)

Ages & Stages Questionnaire, 3rd Edition

Brief Infant-Toddler Social & Emotional Assessment (BITSEA)

Safe Environment for Every Kid
(SEEK)

LEGO PAIN ASSESSMENT TOOL

0 1 2 3 4 5 6 7 8 9 10

0 NO PAIN: A face smiling. A face that is smiling. NO PAIN.

1 MILD PAIN: The person reports the pain. CAN BE IGNORED.

2 MODERATE PAIN: Person has moderate pain. INTERFERES WITH TASKS.

3 SERIOUS PAIN: Serious pain. INTERFERES WITH CONCENTRATION.

4 SEVERE PAIN: Severe pain. UNBEARABLE.

5 WORST PAIN POSSIBLE: Agony, screaming. Pain described beyond description. DEATH IMMINENT.

Created by Brenda Powell Smith, www.ThePainAssessment.com. This chart is not licensed, endorsed, or created by the LEGO Group.

Scoring Rubric Methodology Dimensions:

Methodology	Unknown	Unsatisfactory	Somewhat Satisfactory	Satisfactory	Very Satisfactory
Strong Reliability	0	1	2	3	4
Strong Validity	0	1	2	3	4
Sensitive to Identifying a Need for further assessment	0	1	2	3	4
Easy to Administer	0	1	2	3	4
Easy to Score	0	1	2	3	4

Scoring Rubric Content Dimensions:

Content	Unknown	Unsatisfactory	Somewhat Satisfactory	Satisfactory	Very Satisfactory
Covers Domains*	0	1	2	3	4
Appropriate Reading Level for Parents	0	1	2	3	4
Assesses age 1 – 36 months (1 tool for all ages)	0	1	2	3	4

*Domains: developmental skills, regulation, autism, trauma informed care, cognitive, language, motor, social emotional, adaptive functioning

Scoring Rubric Implementation Dimensions:


Implementation	Unknown	Unsatisfactory	Somewhat Satisfactory	Satisfactory	Very Satisfactory
Culturally /Linguistically Appropriate	0	1	2	3	4
Does not feel Threatening to Parent	0	1	2	3	4
Available in Multiple Languages	0	1	2	3	4
Affordable (Available at no Cost)	0	1	2	3	4
Does not require Professional Credential to Score	0	1	2	3	4
Can Connect to EHR	0	1	2	3	4

Breakdown of Scores

56 Total Possible Points across 14 domains:

Tool	Score	Percent Score
Survey of Wellbeing of Young Children (SWYC)	52/56	93%
Parents' Evaluation of Developmental Status (PEDS)	49/56	88%
Ages & Stages Questionnaire – Socio-Emotional (ASQ-SE)	47/56	83%
Ages & Stages Questionnaire, 3 rd Edition	46/56	83%
Brief Infant-Toddler Social & Emotional Assessment (BITSEA)	36/56	63%
Safe Environment for Every Kid (SEEK)	31/56	55%

Why the SWYC?



- High Ratings across all the Domains (Applicable to Clinical Needs)
- Pediatric Offices could use just one tool & it would screen for development, autism & trauma informed events
- It was developed with well-child baby checks in mind
- Relationship-Focus in the Family Section

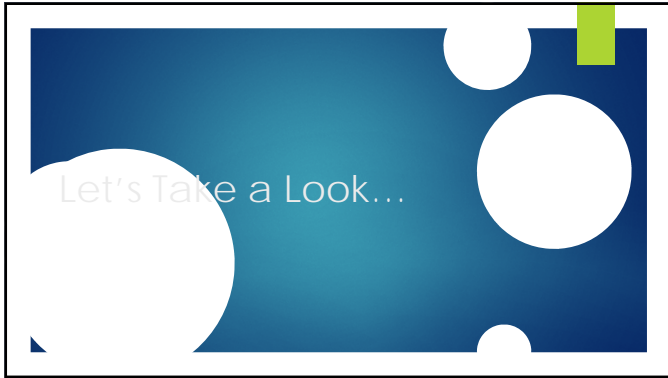
What Makes the SWYC Different from what I'm already trained in using?

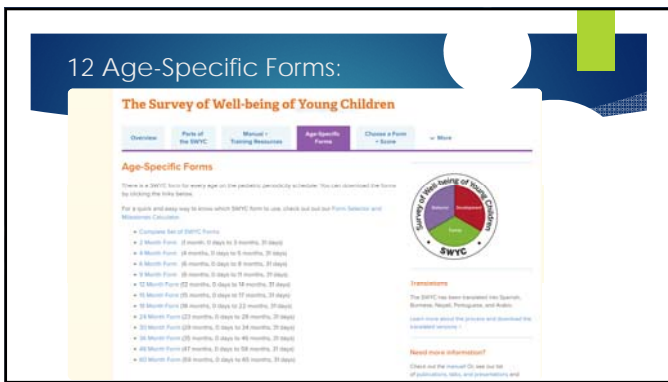


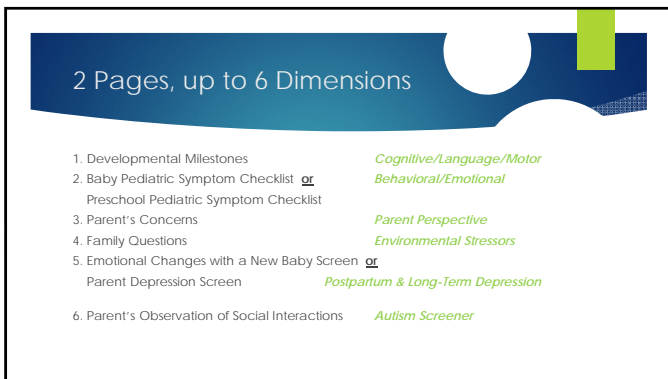
A Note...



- Any of these Early Childhood Assessment Tools are Better than Nothing.
- The SWYC really stands apart due to the Relational components it assesses.
- You get wonderfully informative qualitative information about the child, the home environment and the Parent-Child Relationship







3. Parent's Concerns

PARENT'S CONCERNS

Do you have any concerns about your child's learning or development? Not at all Somewhat Very Much

Do you have any concerns about your child's behavior? Not at all Somewhat Very Much

4. Family Questions (Assessing Stress in the Environment)

FAMILY QUESTIONS
Because family members can have a big impact on your child's development, please answer a few questions about your family below.

1 Does anyone who lives with your child smoke tobacco? Yes No

2 In the last year, have you ever drunk alcohol or used drugs more than you meant to? Yes No

3 Have you felt you wanted or needed to cut down on your drinking or drug use in the last year? Yes No

4 Has a family member's drinking or drug use ever had a bad effect on your child? Yes No

5 Within the past 12 months, we worried whether our food would run out before we got money to buy more. Never true Sometimes true Often true

6 In general, how would you describe your relationship with your spouse/partner? No tension Some tension A lot of tension Not applicable

7 Do you and your partner work out arguments with: No difficulty Some difficulty Great difficulty Not applicable


8 During the past week, how many days did you or other family members read to your child? 0 1 2 3 4 5 6 7

A Saline County Pilot Program's feedback found:
"The greatest value of the SWYC was the Family Section. These questions provided an important avenue to open up hard conversations with families." -Nebraska Children & Families Foundation (2016)

4. Family Questions (Assessing Stress in the Environment)

► This Section is what sets the SWYC apart from other instruments.

"They [pilot program staff] felt that the results of the ASQ and the SWYC are very similar, yet the SWYC has the advantage of having the family section. This has proven to be invaluable for staff."




-Nebraska Children & Families Foundation (2016)

We've Got a Tool
for That!
(and it's also FREE!)



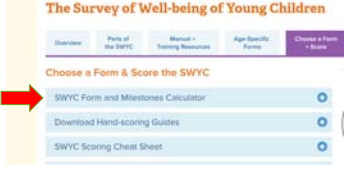
Easy-Peasy...

- ▶ SWYC made a hard job easy.
- ▶ To calculate for Prematurity:
 1. Go to www.theSWYC.org
 2. Click on :
"Choose a Form + Score"



Easy-Peasy...

3. Click:
"SWYC Form and Milestones Calculator"



Easy-Peasy...

4. Click to download the excel file

Choose a Form & Score the SWYC

SWYC Form and Milestones Calculator

Click here to download or Email file that serves two useful functions:

- Calculate which age-specific SWYC form to use for a particular child (given the date of administration, the child's DOB, and weeks premature if applicable)
- Find out whether a child's Milestones score is above or below the scoring threshold (given the date of administration, the child's DOB, weeks premature if applicable, and the raw raw Milestones score)

Download Hand-scoring Guides

SWYC Scoring Cheat Sheet

Easy-Peasy...

- ▶ And this free tool pops up to do the work for you!
- ▶ Be sure to save to your desktop and now you're set.

SWYC Form Selector
Enter values in yellow cells

Date of administration:
DOB:

Weeks premature?

Chronological age: (enter age will only be adjusted if child is under 24 months and was born at least 3 wks premature)

Prematurity adjusted age (if needed):

SWYC form to use:

Milestones Scoring Calculator
Complete form selector above, and then enter milestones raw score below

Total Milestones Score:

This child's score:

Use with Clients born Premature

- ▶ You only have to enter 2 items:
 1. The Child's DOB
 2. How many weeks Premature

SWYC Form Selector
Enter values in yellow cells

Date of administration:
DOB:
Weeks premature:

Chronological age: (enter age will only be adjusted if child is under 24 months and was born at least 3 wks premature)

Prematurity adjusted age (if needed):

SWYC form to use:

Milestones Scoring Calculator
Complete form selector above, and then enter milestones raw score below

Total Milestones Score:

► And the spreadsheet will calculate the rest, telling you what form to use ☺

SWYC Form Selector	
Enter values in yellow cells	
Date of administration:	8/1/18
DOB:	3/16/18
Weeks premature?	6.00
Chronological age:	8 months, 17 days
Prematurity adjusted age (if needed):	3 months
SWYC form to use:	2 Month Form

(note: age will only be adjusted if child is under 24 months and was born at least 3 weeks premature)

Now, to Score....

Scoring Developmental Milestones

There's a Tool for That!


(Remember that Easy-Peasy Tool you already downloaded?)

SWYC Form Selector	
Enter values in yellow cells	
Date of administration:	8/1/18
DOB:	3/16/18
Weeks premature?	6.00
Chronological age:	8 months, 17 days
Prematurity adjusted age (if needed):	3 months
SWYC form to use:	M/C/L

Milestones Scoring Calculator	
Complete form selector above, and then enter milestones raw score below	
Total Milestones Score:	
This child's score:	


Longitudinal Scoring (Over Time)

- ▶ The SWYC has a Longitudinal Chart where you can track your client's scores over time.
- ▶ Go to www.theSWYC.org
- ▶ Choose a Form + Score
- ▶ SWYC Scoring Cheat Sheet
- ▶ *Download the SWYC Comprehensive Scoring Chart*



What to do with Positive Results

- ▶ Remember, this screening instrument doesn't give a diagnosis—it only indicates **RISK**.
- ▶ If a child scored within the **"Needs Reviewed" Range**, it means a conversation with the Parent is needed:
 1. Explain the Findings to Parents
 2. Consider appropriate courses of Action for the Child
 3. Communicate Findings to other appropriate Providers



Pro-Tips for Hard Conversations
